

THE RSSI Communicator

FALL 2015

Railway Interchange 2015 Returning to Minneapolis

October 4 to 7, 2015

**AREMA, REMSA, RSI and RSSI Preparing For
Record Number Of Exhibitors and Attendees**





A Letter from the President

In only a few weeks, the show floor for the annual Railway Interchange will open its doors in Minneapolis, MN October 4-7, 2015. In our continuing effort to make our annual exhibitions a learning experience for every attendee, customer and supplier, our goal is to present the latest technologies in the rail industry, talk about new trends, and most importantly connect with the industry experts. Railway Interchange 2015 is sponsored by AREMA, RSI, REMSA and RSSI making this the largest combined railway exhibition and technical conference in North America! This year's motto sets the stage – Moving the Railroad Industry Into the 21st Century – for the 658 exhibiting companies and the over 8000 expected attendees. The Railway Interchange show is certainly a highlight for both customers and suppliers and I encourage you to take full advantage of the show program.

I am also looking forward to welcoming you at one of the RSSI social events. We invite you to attend the Sunday October 4, reception and dinner and the Monday October 5, hospitality suite both at the Marriott Center City Ballroom.

I also would like to take the opportunity to thank RSSI Executive Director, Mike Drudy and RSSI Office Manager, Dot Frenette for a seamless transition to our new RSSI headquarters in Jacksonville, FL. This move is seen as beneficial not only by RSSI member companies but also by our rail and transit customers.

While our location has changed, our continuous support of our valuable members has not changed. We are committed to working continuously on promoting the supply industry to our customers.

Lastly I would like to announce that next year marks the 56th anniversary of the RSSI C&S Exhibition and we will be returning to the Gaylord Texan Convention Center, June 28-30, 2016.

I am looking forward seeing you at the upcoming Railway Interchange.

Best regards,

John Paljug
President RSSI 2015

More Pics from The 2014 Nashville Exhibition



PTC Mandate

This article is reprinted with permission from the August 10, 2015 issue of Progressive Railroading's electronic newsletter

FRA updates Congress on PTC status, says most railroads will miss deadline

Most railroads will miss the federally mandated Dec. 31 deadline to implement positive train control (PTC), the Federal Railroad Administration (FRA) said in a detailed report to Congress late last week.

The news came as no surprise, as both the FRA and railroad industry leaders have indicated in prior reports and announcements that most railroads will not meet the deadline.

"The Federal Railroad Administration will continue to use its resources and expertise to help railroads achieve the critical goal to have positive train control implemented," FRA Acting Administrator Sarah Feinberg said in a prepared statement announcing the latest report's release.

According to the report, the Association of American Railroads (AAR) estimates that as of June, Class I's have completed or partially completed installing more than 50 percent of locomotives that require PTC equipment; deployed 50 percent of wayside units; replaced 50 percent of signals; and completed most of the required mapping for PTC tracks.

By Dec. 31, AAR projects that 39 percent of locomotives will be fully equipped; 76 percent of wayside interface units will be installed; 67 percent of base station radios will be installed; and 34 percent of required employees will be trained.

According to the American Public Transportation Association (APTA), 29 percent of commuter railroads are targeting Dec. 31 for completion of PTC installation. Full implementation of PTC for all computer lines is projected by 2020, the report states.

APTA President and Chief Executive Officer Michael Melaniphy said the commuter-rail industry is "100 percent committed" to implementing PTC, but has faced funding challenges in acquiring and installing the technology, as well as significant challenges in acquiring the necessary radio spectrum required for PTC implementation.

"The commuter rail industry has already spent \$950 million on PTC implementation and conservative estimates are that \$3.48 billion is needed to complete implementation nationwide," he said. "Currently, Congress has only appropriated \$50 million for this critical federal safety technology."



RAILWAY INTERCHANGE LESS THAN A MONTH AWAY

Record Number of Exhibitors and Attendees Expected

Booth spaces are sold out, hotel rooms are scarce, attendee registration is growing, and the staffs of RSSI, RSI, REMSA and AREMA are burning the midnight oil!

The Minneapolis 2015 Railway Interchange Conference and Exhibition will open on Friday October 2, 2015 with the initial AREMA Seminars. The opening ceremony for the exhibit halls will start at 1:00pm on Sunday October 4th.

On-site registration for both the AREMA seminars and the exhibitions will open at 7:30am Friday October 1st and you can register in advance on the RSSI website, www.rssi.org.

This is the third Railway Interchange Conference and Exhibition following the 2011 Minneapolis Railway Interchange and the 2013 Indianapolis Railway Interchange.

Railway Interchange brings together the three trade associations RSSI, RSI and REMSA that serve the C&S, Mechanical, and Right-a-Way segments of the rail and transit engineering industry and AREMA, the professional organization for rail and transit engineering.

The event has always enjoyed ample attendance with over 8000 attendees in 2011, over 8500 in 2013 and an expected 9000 in 2015. The attendees and exhibitors represent supply companies and rail and transit employees worldwide including Europe, South America, Australia and Asia.

RSSI will host a reception starting at 6:30pm followed by a buffet dinner at the Marriott Center City Ballroom on Sunday October 4th.

On Monday night October 5th from 7:00pm to 10:00pm the RSSI hospitality suite will be open from 7:00pm to 10:00pm. The hospitality suite will also be located in the Marriott Ballroom and will offer open bars and hors d'oeuvres. Entertainment will be provided by the Atmosphere Entertainment System, a cutting edge technology which will allow guests to enjoy music and performers from the 50s, 60s, 70s and 80s with friends and business associates. The Atmosphere System is being sponsored by, The Okonite Company, Phoenix Contact, Railworks and Railroad Controls, a Wabtec Company. If you have not seen the Atmosphere System, you are in for a unique experience. A dance area will be available for those who still have energy left from a long day at the exhibits.

A Monday Night Football game viewing area will also be available with the Detroit Lions taking on the Seattle Seahawks.

These events will give the employees of RSSI member companies and their customers an opportunity to socialize in a relaxed and casual atmosphere.





2016 RSSI C&S Exhibition Set for Gaylord Texan Resort

Mark Your Calendar for June 28-30

RSSI will hold its 56th Annual C&S Exhibition at the Gaylord Texan Resort in Grapevine, TX from June 28-30, 2016.

RSSI will return to its normal format of:

- Opening night reception and dinner
- Casino event
- Breakfast, lunch and dinner in the exhibit halls on full exhibit days

RSSI is working with the FHWA to host a seminar in conjunction with the C&S Exhibition to review the 2016 revisions to The Manual for Uniform Traffic Control Devices (MUTCD) which should be completed in the first quarter of 2016. The seminar will be held on exhibit setup day June 28, 2016. More information will follow on the RSSI website www.rssi.org.

The Gaylord Texan offers an extraordinary exhibition experience similar to the successful C&S Exhibition held at the Gaylord Nashville Resort in 2014. With over 1500 luxury guestrooms and over 400,000 square feet of exhibition and meeting space the resort will be able to meet all of our exhibition needs.

Registration and booth sales will go on sale Monday January 11, 2016 at 10:30am (EST). You will want to make your reservations early. In 2014 there were over 1800 registered attendees for the exhibition which resulted in late registrants having to stay in area hotels.

GENESIS Exhibition Services will again be the decorator for the 2016 exhibition.

We will be updating the RSSI website with information on the 2016 C&S exhibition and sending out email blasts to all of our member companies and rail and transit customers.

Looking forward to seeing everyone in Texas.

Railway Interchange 2015 • Oct. 4TH – Oct. 6TH 55TH Annual C&S Exhibition • Minneapolis Convention Center

Due to high demand RSSI has added 25 ten x ten exhibition booths in Hall "B" for the 2015 Railway Interchange Conference and Exhibition.

Exhibit Dates and Times are:

Sunday - Oct 4	1:00pm to 6:00pm	Reception from 6:30pm to 7:30pm
Monday - Oct 5	10:00am to 6:00pm	Lunch & Hospitality Suite included
Tuesday - Oct 6	8:00am to 4:00pm	Breakfast & Lunch included

RSSI Social Events:

Sunday - Oct 4	Opening Night Dinner @ Marriott Hotel Ballroom 7:30p – 9:30p
Monday - Oct 5	Hospitality Suite Marriott Ballroom 7:00p – 10:00p

RSSI Hotel Information

Minneapolis Marriott City Center 30 South 7 th Street T: 612-349-4000 Room Rate: \$205	Radisson Blu 35 South 7 th Street T: 612-339-4900 Room /Rate: \$205	Loews Hotel 6011 1 st Ave North T: 612-677-1100 Room Rate: \$219
---	--	---

Room reservations and exhibit registration can be made through the RSSI website. Make sure you indicate your RSSI affiliation.

If you contact the hotel directly reference Railway Interchange RSSI room block.



RSSI is Returning to Texas in 2016!



**56th RSSI
C&S Exhibition**

June 28-30, 2016

**Gaylord Texan
Convention Center**

Grapevine, TX

**2016 Exhibit Booth Sales will open
January 11, 2016 at 10:30 am (EST)**



**Railway Systems Suppliers, Inc. • 13133 Professional Drive, Suite 100 • Jacksonville, FL 32225
Phone: 904-379-3366 • Fax: 904-379-3941 • www.rssi.org**

RSSI Appreciates the Florida Sunshine!

On July 1, 2015 RSSI reached the one year anniversary of its move from Louisville, KY to Jacksonville, FL.

Relocating a business, even a comparatively small business like RSSI, is never without its challenges. The federal laws for non-profit associations require that financial and board documents must be maintained for many decades. In addition RSSI has maintained an extensive historical collection of documents dating back to its predecessor associations.

As with any move preparation is key. The relocation of the historical documents, the working files, and the office equipment happened quickly following several days of packing and prepping in the Louisville office.

Jacksonville has turned out to be an ideal location for RSSI. The CSX, Genesee and Wyoming and FEC are all headquartered in Jacksonville and it is the home of several offices of our member companies.

This gives many of our members an opportunity to stop in and visit the RSSI office.

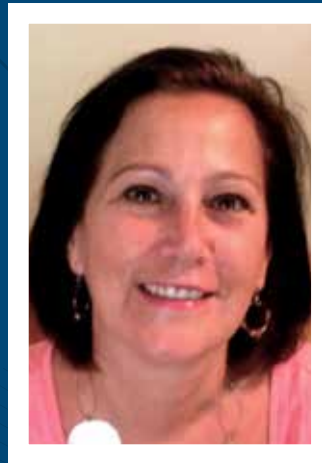


August 1, 2015 was the one year anniversary of our new Office Manager and Executive Assistant, Dot Frenette, joining RSSI. Dot has been a true asset to the organization.

Besides managing the office Dot works with our member companies making sure that all of their needs are met. Whether it involves booth sales, registration, general information, etc, Dot will do all she can to help find a solution to anyone's problem.

If you have a chance to work with Dot you will find it an enjoyable experience.

Dot has lived in Jacksonville for over 30 years moving here from Long Island, NY.



Dot and her husband Gene have four children between the ages of 28 and 13.

Although Dot had no railroad or trade association experience when she joined RSSI it did not take her long to get bit by the railroad bug. She is looking forward to meeting many of the members and customers that she has been dealing with this past year at the Minneapolis exhibition.

With the Minneapolis exhibition opening on October 4, 2015 we are in crunch time for finalizing all of the components of a successful trade show for our exhibitors and their customers.

Please join us at the RSSI sponsored social events in Minneapolis. The RSSI reception and dinner will be held at the Marriott Center City Ballroom on Sunday October 4th starting at 6:30pm and the RSSI Hospitality Suite will be in the ballroom from 7:00pm to 10:00pm on Monday October 5th.

The hospitality suite should be a memorable event. Bob Barranco of BPI, who normally arranges the RSSI Casino night is bringing the Atmosphere Entertainment System to the Marriott for the listening and dancing pleasure of all of our guests.

The Atmosphere Entertainment System is cutting edge technology.

With open bars, hors d'oeuvres, and Monday Night Football this will be an exciting event. We look forward to an enjoyable evening with all of our RSSI members and guests.

Thanks again for another great year,

**Mike Drudy
Executive Director
Secretary/Treasurer**

**Dot Frenette
Office Manager
Executive Assistant**

2015 Scholarship Winners

RSSI is pleased to announce the recipients of the 2015 RSSI scholarship awards.

The W. Ed Rowland Memorial Scholarship has been awarded to Brantley Butcher. Brantley's mother, Mindy Butcher, is an employee of Progress Rail Services.

The recipient of the James R. Higginbottom scholarship is Zoe Yu. Zoe's father, Jian Guo Yu, is employed by Gannett Fleming Inc.

The scholarships are worth \$8,000 payable in eight \$1,000 payments before each semester. The recipients must be enrolled in an accredited North American institution of higher learning and maintain a 3.0 GPA based on a 4.0 scale.

The 2015 RSSI W. Ed Rowland Memorial Scholarship



Brantley Allan Butcher

Brantley is a June 2015 graduate of Madison-Grant High School in Fairmont, IN where he ranked first in his graduating class with non-weighted GPA of 4.0. He was President of his high school class, a member of the National Honor Society and the captain of his varsity tennis team. He was twice selected to the all-conference tennis team.

Brantley will be attending Yale University in the fall of 2015 where his major will be molecular biophysics and biochemistry.

The 2015 RSSI James R. Higginbottom Scholarship



Zoe Tong Yu

Zoe is a June 2015 graduate of Hanover High School in Hanover, NH where she earned a 3.96 GPA. Zoe scored an 800 on the critical reading portion of the SAT and a 750 on the math portion.

She was the principal violinist of her high school orchestra and gained all-state honors as a violinist in the New Hampshire Chamber Ensemble. She was also a varsity member of the Hanover High tennis team and an ice hockey referee.

She placed first in New Hampshire and ninth nationally in the French Grand Concourse.

Zoe will be attending Dartmouth College in the fall of 2015 where she will be studying engineering.

In addition to the two new scholarships, the following are also active:

- Ashton Mensinger - G&B Specialties-Wabtec/Penn State University
- Elisabeth Wydotis - Siemens/University of South Carolina
- Holly K. Avins - Okonite/Purdue University
- Jenna C. Bekeny - GE Transportation/University of Chicago
- Steven J. Chandler - Arthur N. Ulrich Company/Ohio State University
- Anne H. Davis - Transportation Technology Center/California Institute of Technology
- Heather R. Hourdequin - Okonite/University of California Los Angeles
- Kevin Li - Transportation Technology Center / Yale University
- Brent M. Henderson - GE Transportation/Truman State
- Samuel Altland - Hatch Mott MacDonald/University of Pennsylvania

RSSI Officers & Board of Directors

President

John Paljug
Siemens Rail Automation

Executive VP

N. Michael Choat
Railroad Controls Limited

First VP

Walter Winzen
ARMS, Inc.

Second VP

Franklin Brown
Dixie PreCast, Inc.

Executive Director/ Secretary-Treasurer

Michael Drudy

Executive Assitant

Dot Frenette

Directors:

David K. Fox
Railway Equipment Company

Patti jon Goff
PTMW, Inc.

Phil Hess
Rails Company

Ronald L. McDaniel
Western-Cullen-Hayes, Inc.

Arthur J. McGinnis
Simmons-Boardman
Publishing Company

Joseph Noffsinger
GE Transportation Systems

Tim Orlandi
Railworks Corporation

George W. Rudge
Ansaldo STS USA

Bob Ryan
The Okonite Co.

Thomas Ulrich
Arthur N. Ulrich Company



Railway Systems Suppliers, Inc.

13133 Professional Drive, Suite 100
Jacksonville, FL 32225

Michael Drudy
Executive Director

Phone: 904-379-3366
Fax: 904-379-3941

www.rssi.org

Upcoming Events

2016

June 28-30
RSSI C&S Exhibition
Grapevine, TX

2017

September 17-20
RSSI/Railway Interchange
Indianapolis, IN

2018

May 22-24
RSSI C&S Exhibition
Omaha, NE

2019

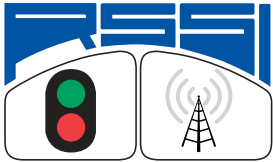
September 21-24
RSSI/Railway Interchange
Minneapolis, MN

2020

June 2-4
60th Annual RSSI C&S Exhibition
Nashville, TN

2021

September 26-28
RSSI/Railway Interchange
Indianapolis, IN



Railway Systems Suppliers, Inc.

13133 Professional Drive, Suite 100
Jacksonville, FL 32225